



Enkel og trygg

Ambix Nova gjør det mulig å starte en infusjon med 3 klikk.

1

Installer infusjonssettet

2

Programmer parameter

3

Start infusjon



Ergonomisk håndtak
Enkel å betjene



Bred fargeskjerm
Høy synlighet



Intuitivt tastatur
Enkel i bruke

Den komplette løsningen for parenteral ernæring fra Fresenius Kabi.

Infusjonssett med fargekode
Enkel å betjene



Ambix nova

Inspirert av pasienters liv

Infusjon som gis hjemme må infunderes gjennom en pumpe for sikker og effektiv infusjon.

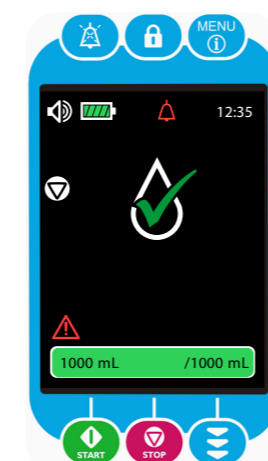
Ambix nova er den nye generasjonen ambulerende pumpe fra Fresenius Kabi.

Det unike designet er inspirert av pasienters liv, for å gjøre infusjon enkel og trygg.



Brukervennlig grensesnitt

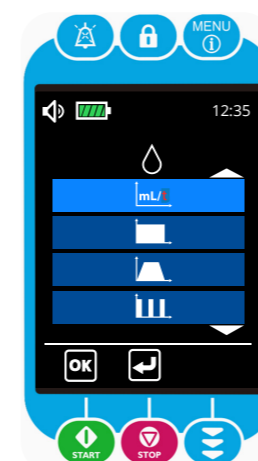
- Grafiske symboler for en rask forståelse
- Overvåkingsskjerm for å følge infusjonsstatus kontinuerlig



Monitoreringsskjerm

Klar-til-infusjonsmodus

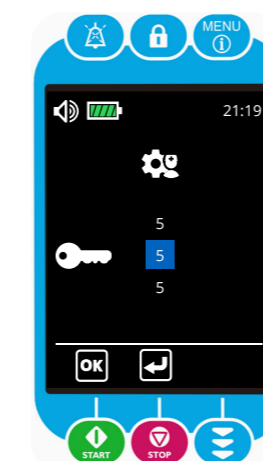
- Enkel infusjonshastighet
- Kontinuerlig
- Ramp
- Periodisk modus



Infusjonsmodus

Sikker infusjon

- Låsbart tastatur
- Ultrasonisk luftdeteksjon
- Anti-friflyt klemme
- Okklusjonstrykksensor



Sykepleierlås



Ambix nova ryggsekker for pasientmobilitet

Voksenmodell
Robust og komfortabel til voksne



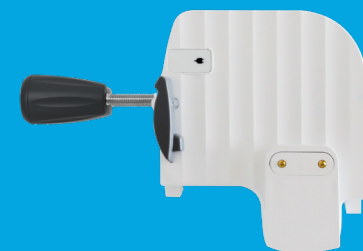
Barnemodell
Liten og lett, spesielt designet for barn

Ambix nova utstyrstilbehør

Ambix nova infusjonspumpers tilbehør Smart Holder Power/Smart Holder Com og Partner software er også kompatibel med Amika/Amika+ enterale ernæringspumper.



Smart Holder for strømforsyning og Smart Holder COM for å aktivere dataforbindelse.



Partner programvare for vedlikehold.



Technical details

Infusion

Infusion modes

- Flow rate only mode: continuous infusion at a flow rate
- Continuous mode: continuous infusion at a flow rate, volume and time
- Ramp mode: 3 phases infusion at a volume and time
- Intermittent mode: cyclic infusion at a flow rate, volume and time

Flow rate

From 1 mL/h to 600 mL/h, 1 mL/h increments

Accuracy

+/- 5% for flow rate ≥ 10 mL/h +/- 0,5 mL for flow rate < 10 mL/h

Volume range

From 1 mL to 9999 mL, 1 mL increments

Priming

Automatic, semi-automatic and manual priming are available

Delayed start

Delayed start enables to postpone start of a new infusion from 1 min. to 24 h

KVO (keep vein open)

KVO function is a low flow rate from 1 mL/h to 10 mL/h to keep vein open during all infusion interruptions

Night mode

Night mode enables to manage pump luminosity at night by decreasing screen brightness

Max flow rate

Customization of pump flow rate to not exceed (from 1 mL/h to 600 mL/h)

Keypad lock

Disabling keypad to prevent unintentional key press

Nurse setting lock

Possibility to prevent patient from changing settings, access secured by code

Alarms / Informations

High priority alarms (Pumping stops and red LED blinking)

Missing set, Door open, Upstream occlusion, Downstream occlusion, Empty bag / Air inline, End of infusion, Empty battery, Technical alarms

Low priority alarms (Pumping continues and orange LED is fixed)

End of infusion pre-alarm, Empty battery pre-alarm, Start reminder

Occlusion alarm

2 levels:

Low: 487.5 mmHg +/- 187.5 mmHg

High: 787.5mmHg +/- 262 mmHg

Air alarms

Single bubble volume setting: from 0.125 mL to 0.75 mL

Cumulated bubbles volume setting: from 0.25 mL to 0.75 mL

Duration of cumulated bubbles detection: from 1 min to 30 min.

End of infusion pre-alarm

Customizable alarm to notify approaching end of infusion from 1 min. to 59 min. or from 1 mL to 999 mL

History menu

Infusion history (250 infusion events), Cumulative counter of volume infused during a period of time (from 1 to 99 days), Alarm history (250 alarm events)

Reset manufacturing settings

Automatic reset of all settings and history information

Technical specifications

Pumping mechanism

Linear peristaltic pumping system

Display

Color LCD 64.8 mm x 48.7 mm (320 pixels x 240 pixels)

Dimensions (H/W/D) / Weight

Pump: Approx. 156.4 mm x 129.7 mm x 49 mm / ~ 0.66 kg

Smart Holder Power: Approx. 132 mm x 118 mm x 46 mm (without pole clamp) / ~ 0.45 kg

Clamp

Versatile rotary clamp to fix on a rail (10 - 35 mm) or a pole (Ø 8 - 40 mm)

Battery

7.2 V Lithium Ion rechargeable battery / 16.2 Wh

Battery life: minimum of 24 hours at 25 mL/h

Battery level indication on the display

Maximum charging time: 6 hours with pump off

Power consumption

Maximum 9 W in standard operating conditions

Power supply

Smart Holder input

- AC input voltage: 100-240 Vac

- AC input frequency: 50/60 Hz

- AC input current: 110 mA-205 mA

Smart Holder output: 9 Vdc +/- 5 % / 9 W (maximum load)

Power cable length: approximately 2 m

Compliance with standards

Conform to IEC 60 601-1, IEC 60 601-1-2, IEC 60601-2-24, IEC 60601-1-8, IEC 60601-1-11

Conform to the 93/42/EEC Medical Directive

0123 : Notified body number (TÜV SÜD Product Service GmbH, Ridlerstrasse, 65, 80339 München, Germany)

Protection Index

Pump: IP35-Index of protection against solid foreign objects (> 2.5 mm) and water jets from any direction

Smart Holder Power: IP32-Index of protection against solid foreign objects (> 2.5 mm) and dripping liquids

Electrical compliance

Protection against leakage current: defibrillation-proof type CF

Protection against electric shocks: class II

Lights

Customization of screen brightness (10 levels)

Pumping LED activation from 1 sec. to 60 sec. frequency

Sound

Customization of sound level (3 levels), time between 2 alarms (from 2 sec. to 15 sec.), Key beep activation

Date & Time

Customization of clock and calendar. 12h or 24h format

Ambix nova administration set

Free-flow protection

All sets are designed with the Ambix nova clamp preventing the risk of free-flow when the door is opened and when the set is disengaged

Set length

Ambulatory set ~300 cm - article code: M46421820

Stationary set ~320 cm - article code: M46421910

Materials

Administration sets are made with PVC

Free of DEHP, latex and endotoxin

Ambix nova accessories

Backpack for ambulatory use

Child model

Adult model

Accessory trolley

Ambix nova & Amika Partner

Software for maintenance activities

Smart Holder Power

Pump Holder accessory with integrated AC/DC adapter for power supply only

Smart Holder COM

Pump Holder accessory with integrated AC/DC adapter for power supply, nurse call system and maintenance activities

Ambix is a registered trademark by Fresenius Kabi in selected countries. Due to our policy of continuous product development as well as changes in standards, the features described are subject to change. Please contact us for the most updated information. These medical devices are regulated by health authorities. Please refer to the respective CE Declaration of Conformity for the applicable Medical Device Directive or Regulation. Pictures are not contractual.

FRESENIUS KABI
caring for life

Fresenius Kabi Norge AS
Postboks 4646, Nydalen, 0405 Oslo
Telefon 22 58 80 00
markedsavdelingen@fresenius-kabi.com
bestilling@fresenius-kabi.com | www.fresenius-kabi.com/no

0123

DHF-0921 / CC16422-0 - 5020-V01.mms 2022

FRESENIUS KABI
caring for life

Ambix nova

Ambulerende intravenøs infusjonspumpe

